

Opening hours and Tickets

OPEN

- ★ May to October
at 9:30-17:00 (Entrance closed at 16:30)
- ★ November to February
at 9:30-16:30 (Entrance closed at 16:00)

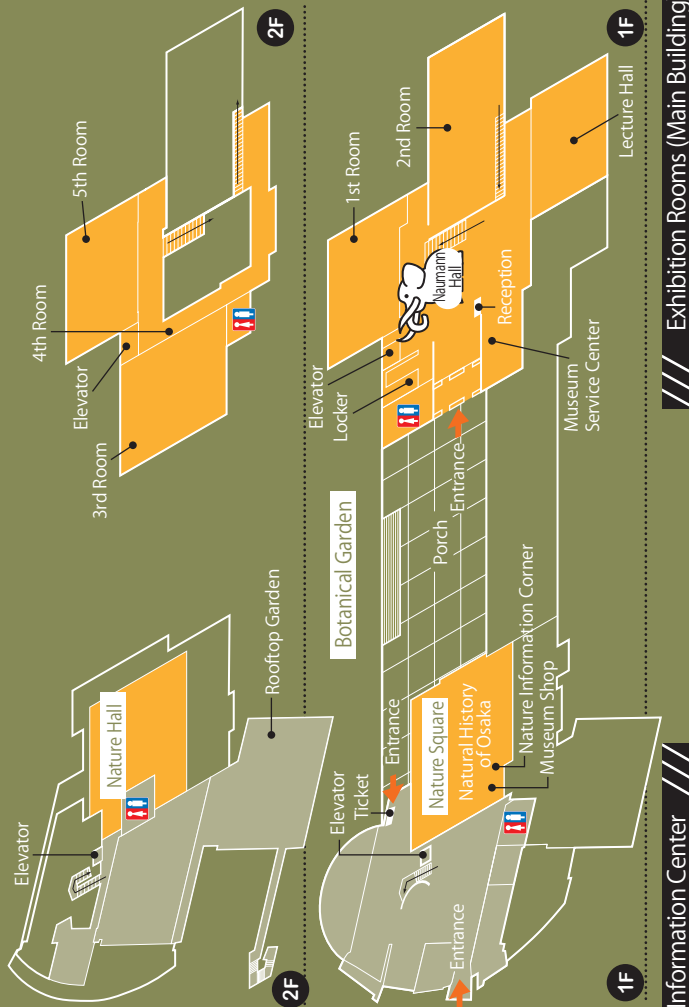
Admission Fee	Exhibition Rooms (Main Building)	Natural History of Osaka (Information Center)
Adult	300YEN	Free
Student	200YEN	**Extra fee required for Special Exhibition
Child under age 15	Free	Free

Discounted Tickets for Groups(30 or more)

CLOSED

Monday and 28th December to 4th January sometimes irregularly.

- 🚭 *Smoking is prohibited except for the designated areas.
- 📷 *As a rule, everyone is free to take photos for private use and non-commercial purpose.



Exhibition Rooms (Main Building)

Information Center

Activities

We have a variety of activities as follows.

●Research activity

We research the nature and geological history of Osaka. Each curatorial staff has a professional specialty and performs his/her own studies, as well as collaborate as a team. Collection and laboratory equipment are also utilized by scientists from home and abroad.

●Collection and preservation

We collect a wide selection of specimens and literature related to the natural history. These are utilized for scientific research and exhibition. We preserve them so that they will be available to the next generation.

●Educational activities

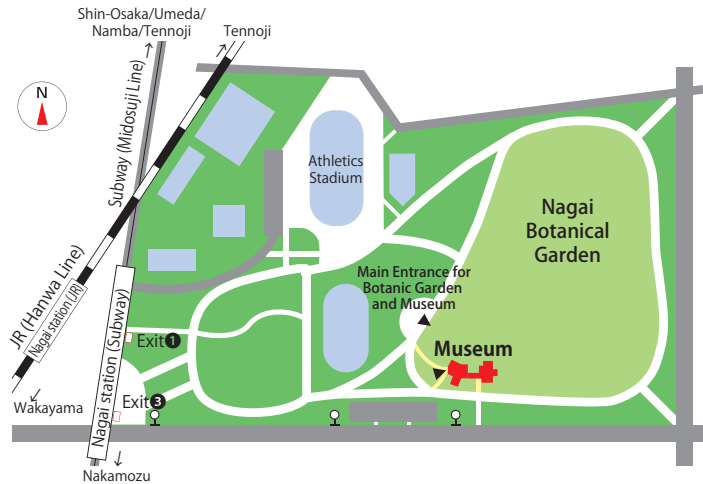
We host a variety of educational events, such as nature hiking, workshops, lectures, botanic tours and so on. We also accept guest scientists and museum trainees from universities.

●Association of Osaka Museum of Natural History

There is a "Friends of Osaka Museum of Natural History" group, organized by members who use the museum extensively to study nature. For information, please ask tomonokai@mus-nh.city.osaka.jp

●Nature Information Corner

There is an information counter with curatorial staff. Your questions about nature, exhibitions and activities are welcome.



Access

By subway, getting off at "M26:Nagai" station of "Midosuji Line". Ten minutes walk toward the east.
By JR, getting off at "Nagai" station of "Hanwa Line". Fifteen minutes walk toward the east.



Osaka Museum of Natural History

Nagai Park 1-23, Higashi-Sumiyoshi-ku, Osaka 546-0034, Japan
Phone +81-6-6697-6221 / Facsimile +81-6-6697-6225
Website <http://www.mus-nh.city.osaka.jp/>



Osaka Museum of Natural History

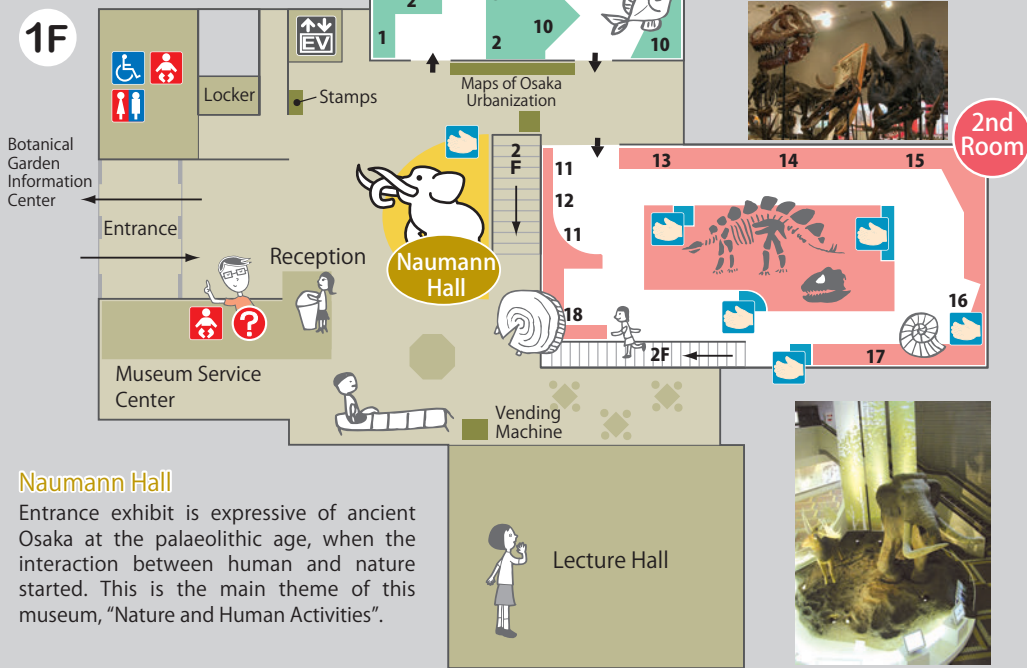
GUIDE



1st Exhibition Room The Natural World Around Us

What kind of environment are you living in now? Let us take a look at what kind of creatures exist in the diverse environments of the Osaka area.

1F



Naumann Hall

Entrance exhibit is expressive of ancient Osaka at the palaeolithic age, when the interaction between human and nature started. This is the main theme of this museum, "Nature and Human Activities".

2nd Exhibition Room History of the Earth and Life

This exhibit begins from the formation of the Osaka Plain, and then traces back in time, the history of the islands of Japan, and the Earth, as well as the history of life itself.



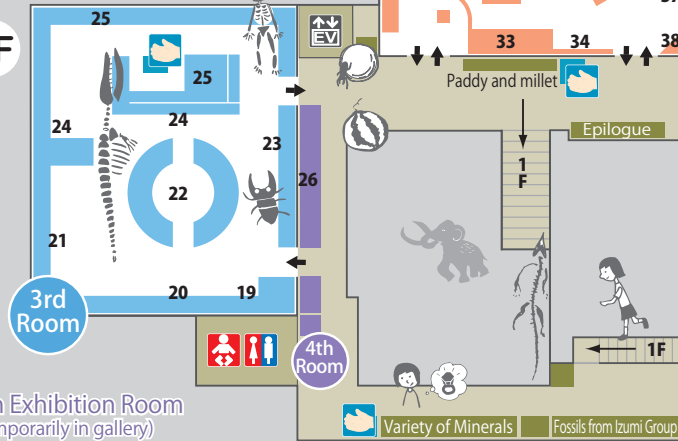
2nd Room



3rd Exhibition Room Evolution of Life

The long history since the origin of life has increased the diversity in the global biota. Evolution resulted in a variety of body structures and shapes geographically and ecologically.

2F



4th Exhibition Room (temporarily in gallery) The Gifts from Nature

Nature has provided us with gifts. Where does the food, which you see on your dining tables, come from?

Hands on
You can touch the items with this symbol mark.

5th Exhibition Room The Lives of Living Things

Plants and animals live out their lives in close connection with various environments and other organisms around them. Many of these ecological links are introduced in this exhibit.



Osaka Museum of Natural History

1F Naumann Hall

First Exhibition Room The Natural World Around Us

- 1 Alien species around the ports in Osaka
- 2 Urban nature
- 3 Rural nature
- 4 Nature of country forest
- 5 Virgin forest of ancient Osaka
- 6 Endangered habitat and life
- 7 Insects in the forests of Osaka
- 8 Foods of prehistoric man in Osaka
- 9 Influences of alien species
- 10 Life in Osaka Bay

2nd Exhibition room History of the earth and life

- 11 History of Osaka Plain
- 12 The Great Ice Age
- 13 The Quaternary Period
- 14 The Osaka Group
- 15 The age of mammals
- 16 Late Cretaceous fossils from the Izumi Mountains of Osaka
- 17 The age of dinosaurs and ammonites
- 18 Aspects of the Palaeozoic sea and forest

2F 3rd Exhibition room Evolution of life

- 19 Speciation
- 20 Dispersal
- 21 Coevolution
- 22 Evolutionary diversity of insects
- 23 Zoogeography of insects
- 24 Sea as the cradle of life
- 25 Whence come we?

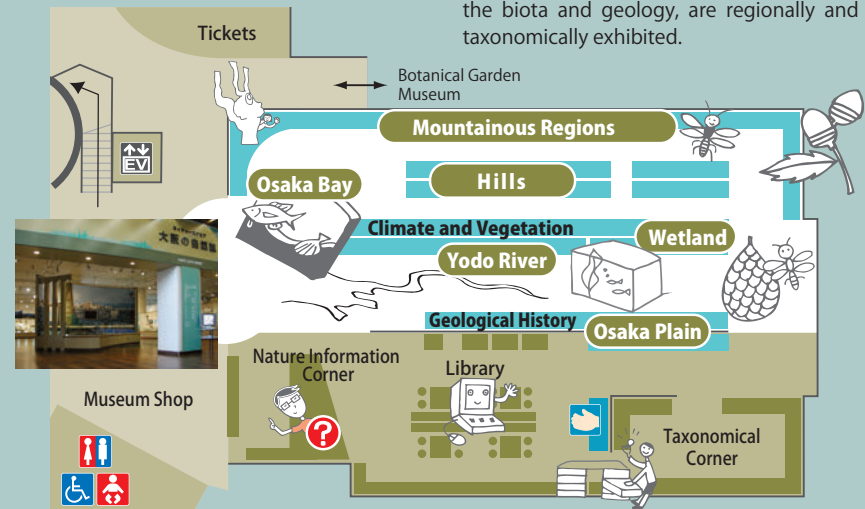
4th Exhibition room The diversity of life

- 26 Food plants and their homes

5th Exhibition room The Lives of Living Things

- 27 Different Species, different way of life
- 28 Waiting for their chance
- 29 Quest for the new world
- 30 Predator-prey interactions
- 31 Competition for resources
- 32 Parasitism and mutualism
- 33 Inter-specific interactions among three species
- 34 Habitats created by other organisms
- 35 Animals utilizing various environments
- 36 Wide-ranging travelers
- 37 No environment exists isolation
- 38 Connections to human beings and their lives

Information Center



Natural History of Osaka

Information on the nature of Osaka, such as the biota and geology, are regionally and taxonomically exhibited.

1F Nature Square Natural History of Osaka

2F Nature Hall Planned exhibitions are held temporarily here.